



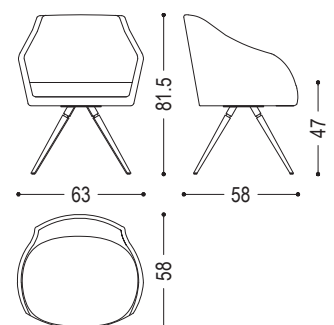
Elegant and enveloping armchair with wooden legs. Expanded polyurethane structure in a continuous line between the back and the armrests. Soft cushion integrated in the seat. Also available with revolving base.

CODE	SIZE	LEATHER FABRIC	A1	A2	A3	A4
ARM CHAIR-WOOD	W.63 x D.58 x H.47/81,5	D1	■	■	■	■
		D2	■	■	■	■
		D3	■	■	■	■
		D4	■	■	■	■
		D6	■	■	■	■

AVAILABLE FINISHES:











- A1:** walnut without knots, elm
- A2:** oak without knots, cherry, maple
- A3:** oak without knots finish: whitened, mystic black, neutro
- A4:** oak without knots pigmented: ash grey, white milk, total black
- D1:** fabric: canvas, divina melange 2, hallingdal 65, velvet harald
- D2:** fabric: maple
- D3:** leather: camoscio, cristal
- D4:** leather: nabuk
- D6:** COL, COM

FEASIBILITY REVOLVING BASE	
ALL AVAILABLE WOOD CATEGORIES	■








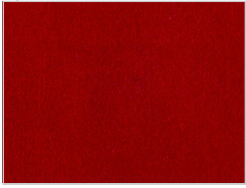


ARM CHAIR WOOD | AVAILABLE FINISHES

WOOD

A1			
	walnut without knots	elm	
A2			
	oak without knots	cherry	maple
A3			
	oak without knots finish: whitened	oak without knots finish: mystic black	oak without knots finish: neutro
A4			
	oak without knots pigmented: ash grey	oak without knots pigmented: white milk	oak without knots pigmented: total black

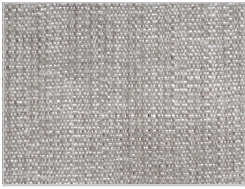
ARM CHAIR WOOD | AVAILABLE FINISHES

LEATHER / FABRIC

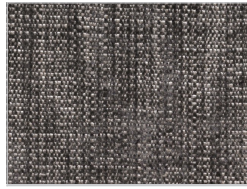
D1					
	<p>fabric: canvas: 114</p> 	<p>fabric: canvas: 124</p> 	<p>fabric: canvas: 134</p> 	<p>fabric: canvas: 154</p> 	<p>fabric: canvas: 174</p> 
	<p>fabric: divina melange 2: 120</p> 	<p>fabric: divina melange 2: 170</p> 	<p>fabric: divina melange 2: 180</p> 	<p>fabric: divina melange 2: 220</p> 	<p>fabric: divina melange 2: 260</p> 
	<p>fabric: divina melange 2: 280</p> 	<p>fabric: hallingdal 65: 103</p> 	<p>fabric: hallingdal 65: 116</p> 	<p>fabric: hallingdal 65: 130</p> 	<p>fabric: hallingdal 65: 166</p> 
	<p>fabric: hallingdal 65: 180</p> 	<p>fabric: hallingdal 65: 182</p> 	<p>fabric: hallingdal 65: 182</p> 	<p>velvet fabric: harald: 443</p> 	<p>velvet fabric: harald: 512</p> 
	<p>velvet fabric: harald: 182</p> 	<p>velvet fabric: harald: 242</p> 	<p>velvet fabric: harald: 283</p> 	<p>velvet fabric: harald: 443</p> 	<p>velvet fabric: harald: 512</p> 
	<p>velvet fabric: harald: 552</p> 	<p>velvet fabric: harald: 582</p> 	<p>velvet fabric: harald: 792</p> 	<p>velvet fabric: harald: 982</p> 	<p>velvet fabric: harald: 982</p> 

ARM CHAIR WOOD | AVAILABLE FINISHES

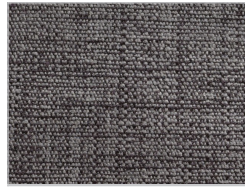
D2



fabric:
maple:
112



fabric:
maple:
132



fabric:
maple:
142



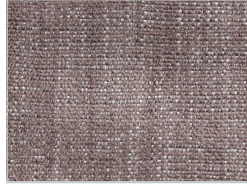
fabric:
maple:
162



fabric:
maple:
192



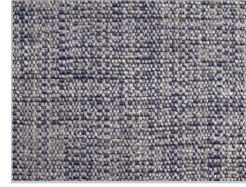
fabric:
maple:
222



fabric:
maple:
232



fabric:
maple:
362



fabric:
maple:
742



fabric:
maple:
792

D3



Leather camoscio:
1



Leather camoscio:
10



Leather camoscio:
11



Leather camoscio:
26



Leather camoscio:
27



Leather camoscio:
28



Leather camoscio:
31



Leather cristal:
13



Leather cristal:
14



Leather cristal:
17



Leather cristal:
18



Leather cristal:
37



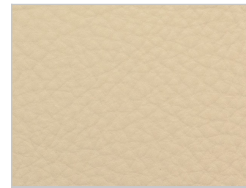
Leather cristal:
49



Leather cristal:
51



Leather cristal:
65



Leather cristal:
70

ARM CHAIR WOOD | AVAILABLE FINISHES

D4



Leather nabuk:
101



Leather nabuk:
102



Leather nabuk:
103



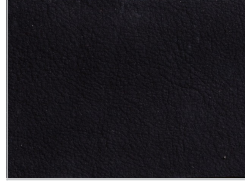
Leather nabuk:
104



Leather nabuk:
105



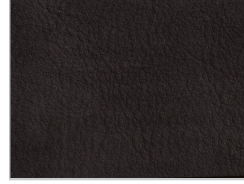
Leather nabuk:
106



Leather nabuk:
107



Leather nabuk:
108



Leather nabuk:
109