



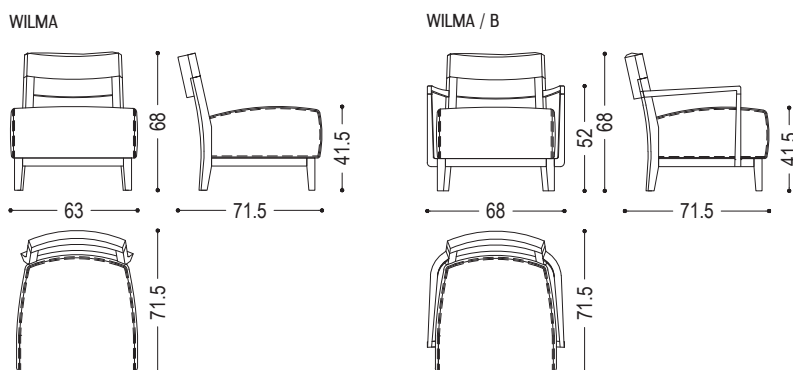
Armchair with solid wood structure. Back with natural edge and comfortable padded seat upholstered in leather or fabric with visible stitching. Available with or without armrests.

| CODE | SIZE | LEATHER FABRIC | A1 | A2 | A3 | A4 |
|-------|---------------------------|----------------|----|----|----|----|
| WILMA | W.63 x D.71,5 x H.41,5/68 | D1 | ■ | ■ | ■ | ■ |
| | | D2 | ■ | ■ | ■ | ■ |
| | | D3 | ■ | ■ | ■ | ■ |
| | | D4 | ■ | ■ | ■ | ■ |
| | | D6 | ■ | ■ | ■ | ■ |

AVAILABLE FINISHES:

- A1:** walnut without knots, elm
- A2:** oak without knots, cherry, maple
- A3:** oak without knots finish: whitened, mystic black, neutro
- A4:** oak without knots pigmented: ash grey, white milk, total black
- D1:** fabric: canvas, divina melange 2, hallingdal 65, velvet harald
- D2:** fabric: maple
- D3:** leather: camoscio, cristal
- D4:** leather: nabuk, utah
- D6:** COL, COM

| FEASIBILITY ARMRESTS | |
|------------------------------------|---|
| IN ALL THE AVAILABLE WOOD FINISHES | ■ |



WOOD

A1



walnut without knots



elm

A2



oak without knots



cherry



maple

A3



oak without knots finish:
whitened



oak without knots finish:
mystic black



oak without knots finish:
neutro

A4



oak without knots pigmented:
ash grey








oak without knots pigmented:
white milk



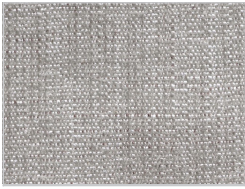
oak without knots pigmented:
total black

LEATHER / FABRIC

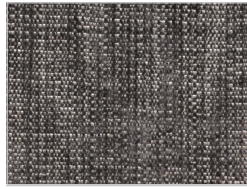
| | | | | | |
|---|---|---|---|---|---|
| D1 |  |  |  |  |  |
| | <p>fabric: canvas: 114</p> | <p>fabric: canvas: 124</p> | <p>fabric: canvas: 134</p> | <p>fabric: canvas: 154</p> | <p>fabric: canvas: 174</p> |
| |  |  |  |  |  |
| | <p>fabric: divina melange 2: 120</p> | <p>fabric: divina melange 2: 170</p> | <p>fabric: divina melange 2: 180</p> | <p>fabric: divina melange 2: 220</p> | <p>fabric: divina melange 2: 260</p> |
| |  |  |  |  |  |
| | <p>fabric: divina melange 2: 280</p> | <p>fabric: hallingdal 65: 103</p> | <p>fabric: hallingdal 65: 116</p> | <p>fabric: hallingdal 65: 130</p> | <p>fabric: hallingdal 65: 166</p> |
| |  | | | | |
| | <p>fabric: hallingdal 65: 180</p> | | | | |
| |  |  |  |  |  |
| | <p>velvet fabric: harald: 182</p> | <p>velvet fabric: harald: 242</p> | <p>velvet fabric: harald: 283</p> | <p>velvet fabric: harald: 443</p> | <p>velvet fabric: harald: 512</p> |
|  |  |  |  | | |
| <p>velvet fabric: harald: 552</p> | <p>velvet fabric: harald: 582</p> | <p>velvet fabric: harald: 792</p> | <p>velvet fabric: harald: 982</p> | | |

WILMA | AVAILABLE FINISHES

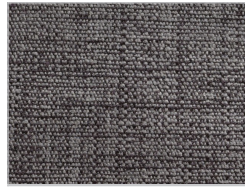
D2



fabric:
maple:
112



fabric:
maple:
132



fabric:
maple:
142



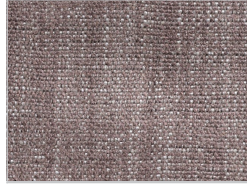
fabric:
maple:
162



fabric:
maple:
192



fabric:
maple:
222



fabric:
maple:
232



fabric:
maple:
362



fabric:
maple:
742



fabric:
maple:
792

D3



Leather camoscio:
1



Leather camoscio:
10



Leather camoscio:
11



Leather camoscio:
26



Leather camoscio:
27



Leather camoscio:
28



Leather camoscio:
31



Leather cristal:
13



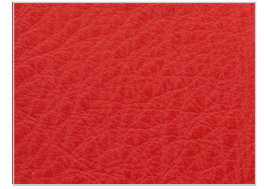
Leather cristal:
14



Leather cristal:
17



Leather cristal:
18



Leather cristal:
37



Leather cristal:
49



Leather cristal:
51



Leather cristal:
65



Leather cristal:
70

WILMA | AVAILABLE FINISHES

| | | | | | |
|----|--|--|--|---|---|
| D4 |  |  |  |  |  |
| | Leather nabuk: 101 | Leather nabuk: 102 | Leather nabuk: 103 | Leather nabuk: 104 | Leather nabuk: 105 |
| |  |  |  |  | |
| | Leather nabuk: 106 | Leather nabuk: 107 | Leather nabuk: 108 | Leather nabuk: 109 | |
| |  |  |  |  |  |
| | Leather utah: 101 | Leather utah: 102 | Leather utah: 103 | Leather utah: 104 | Leather utah: 105 |
| |  |  |  | | |
| | Leather utah: 106 | Leather utah: 107 | Leather utah: 108 | | |