

# LASVIT Technical Sheet

---

## PLISSE CLOUD LIGHTING SCULPTURE

**DESIGNER:** Maurizio Galante

**YEAR OF DESIGN:** 2013

**MATERIAL:** Clear Fused Glass

Maurizio Galante as one of the world's most famous haute couture designers was inspired by timeless plisse fabric. The fashion elements, softness and typical movement of fabric are here transformed into glass. The smaller object is based on the technique of Plisse, which rotates around its own axis. The impressive larger one is based on layering cracked desks.



---

### PACKAGING

#### **Plisse cloud S**

Size: 1500 × 600 × 350 mm

Total weight: 130 kg

Wooden box: 1 pc

#### **Plisse cloud L**

Size: 1300 × 1100 × 630 mm

Total weight: 420 kg

Wooden box: 1 pc

---

# LASVIT Technical Sheet

## PLISSE CLOUD LIGHTING SCULPTURE

### TECHNICAL DETAILS PLISSE S

Type	CE	UL
Light source	1 × LED E27, NT, 2500K 480 Lumens CRI 95 dimmable	1 × LED E26, NT, 2500K 480 Lumens CRI 95 dimmable
Input voltage	240V/50Hz	120V/60Hz
Rated power	6W	6W
Surface finish	polished st. steel	
Cabel lenght	3000mm/118 $\frac{1}{8}$ "	
Canopy color	laquered white glossy	
Prot. rating	IP 20	
Safety class	CLASS I	

# LASVIT Technical Sheet

## PLISSE CLOUD LIGHTING SCULPTURE

### TECHNICAL DETAILS PLISSE L

Type	CE	UL
Light source	5 × LED E27, NT, 2500K 480 Lumens CRI 95 dimmable	5 × LED E26, NT, 2500K 480 Lumens CRI 95 dimmable
Input voltage	230V/50Hz	120V/60Hz
Rated power	30W	30W
Surface finish	polished st. steel	
Cabel lenght	3000mm/118 $\frac{1}{8}$ "	
Canopy color	laqured white glossy	
Prot. rating	IP 20	
Safety class	CLASS I	

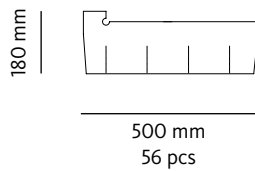
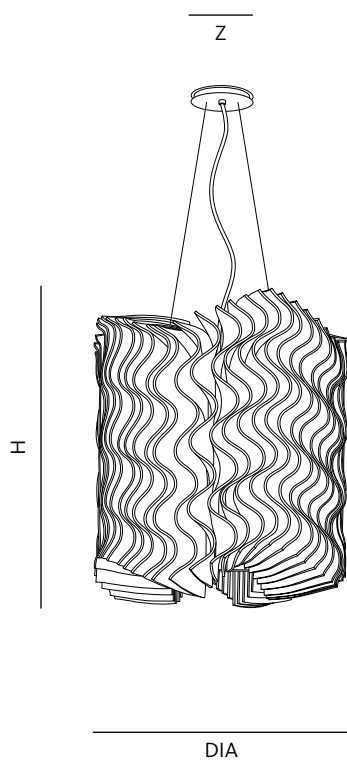
# LASVIT Technical Sheet

## PLISSE CLOUD LIGHTING SCULPTURE

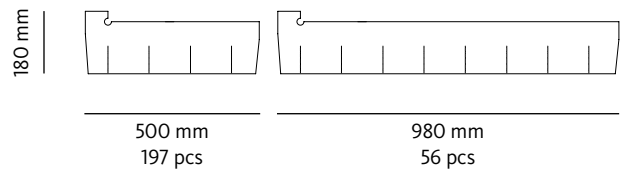
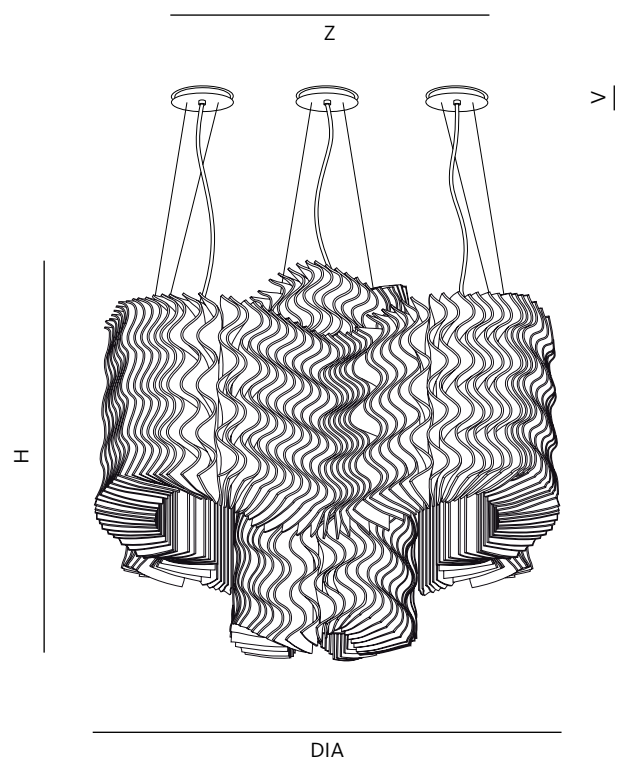
### TECHNICAL DRAWING

**Plisse cloud S**

**Plisse cloud L**



>|



>|

Name	Dia (mm/inch)	H / +L (mm/inch)	Z (mm/inch)	V (mm/inch)
<b>Plisse cloud S</b>	500/19 <sup>1</sup> / <sub>16</sub> "	535/21 <sup>1</sup> / <sub>16</sub> "	140/5 <sup>1</sup> / <sub>2</sub> "	30/1 <sup>3</sup> / <sub>16</sub> "
<b>Plisse cloud L</b>	1340/52 <sup>3</sup> / <sub>4</sub> "	1035/40 <sup>3</sup> / <sub>4</sub> "	5 × 140/5 <sup>1</sup> / <sub>2</sub> "	5 × 30/1 <sup>3</sup> / <sub>16</sub> "

# LASVIT Technical Sheet

<b>Name</b>	<b>Glass color</b>	<b>Item ID – CE</b>	<b>Item ID – UL</b>	<b>Weight (approx.)</b>
<b>Plisse cloud S</b>	clear fused glass	CL010SA-1CE00-0101S1	CL010SA-1UL00-0101S1	56kg/123lb
<b>Plisse cloud L</b>	clear fused glass	CL010SB-1CE00-0101S1	CL010SB-1UL00-0101S1	370kg/816lb

**EACH LASVIT COLLECTION IS UNIQUE BECAUSE IT IS COMPLETELY HANDCRAFTED. TINY BUBBLES AND OTHER IRREGULARITIES MAY OCCUR DUE TO THE NATURE OF THE HIGH QUALITY GLASS-BLOWING TECHNIQUE**