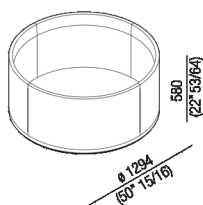




Freestanding marble bathtub with waste
 AVAS1041_

Benedini Associati, 2015



Finishes

-  Black Marquina
-  White Carrara
-  Dark Emperador
-  Green Alpi

Materials

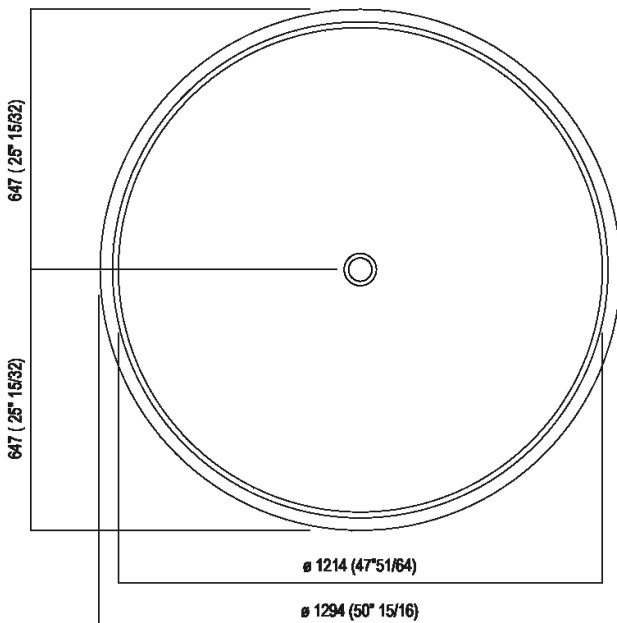
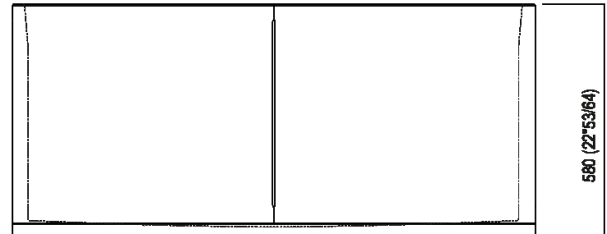
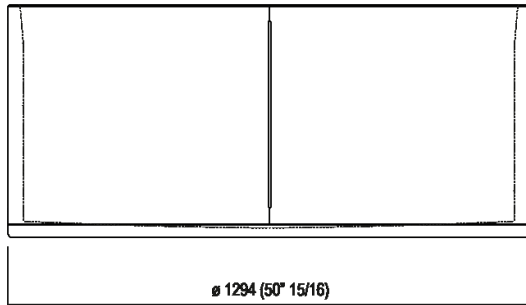
-  Marble

Bathtub with round interior in white Carrara marble, in black Marquina marble, in green Alpi marble or in dark Emperador marble fitted with a chromed waste with siphon and with overflow .MET0722S. The bathtub can be delivered also in stone or marble types on demand, price to be calculated. For all versions the taps can be mounted on the wall or floor. For display models bathtubs use the .MET0434 waste. For an easier installation of the bathtubs we recommend to use the template for the positioning of the waste trap AKITPZVAS.

Height:	58 cm	22" 53/64 inches
Diameter:	129.4 cm	50" 15/16 inches
Weight:	345 kg	761 lbs
Capacity:	521 l	138 gal
Packaging:	160 x 160 x 90 cm	63" x 63" x 37" 7/16 inches
Total weight:	400 kg	881 lbs

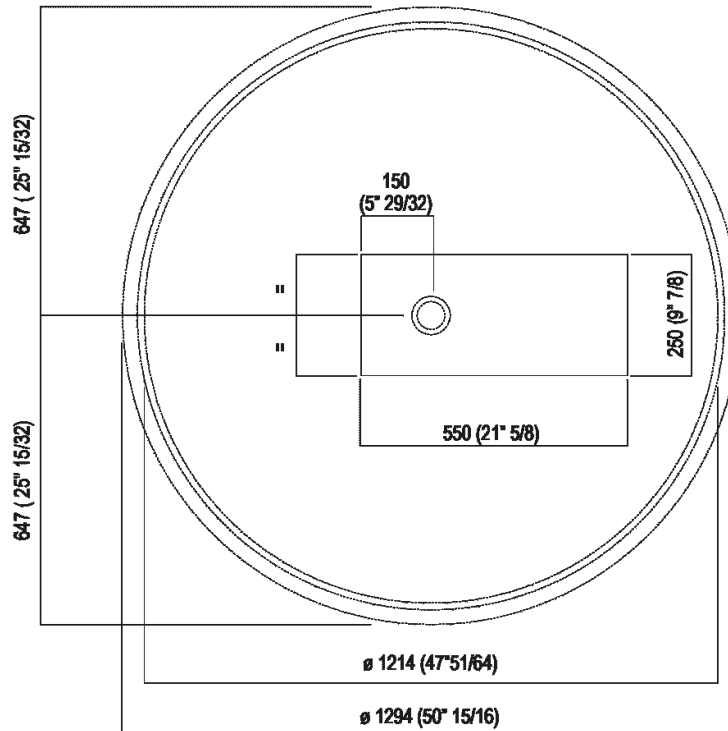


Main dimensions



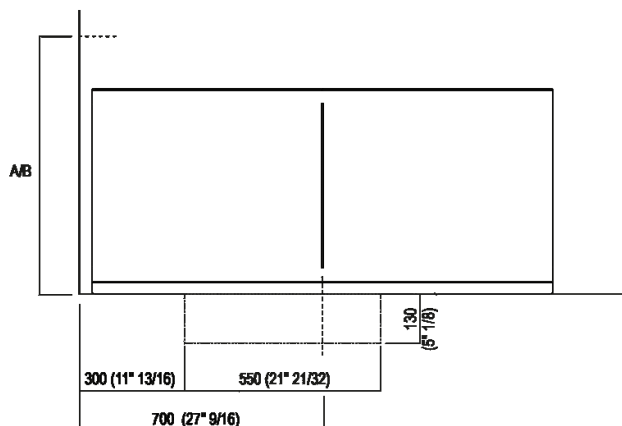


Dimensions for recess





Dimensions for wall mounted taps

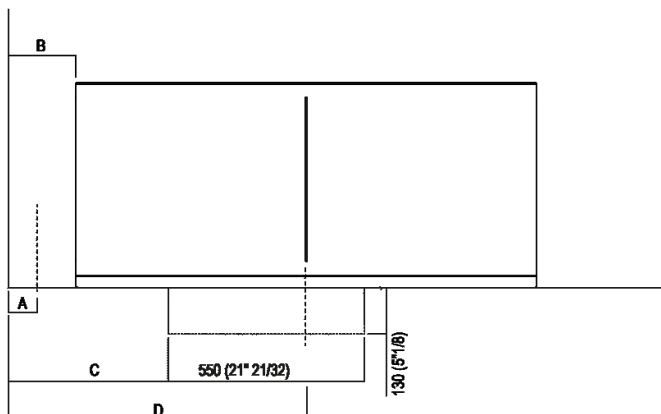


	A*	B**
FEZ 2 (AFEZ027)	750 (29" 17/32)	-
FEZ (ARUB050000L, ARUB051000L, ARUB150000C, ARUB151000C, ARUB190000C, ARUB191000C)	750 (29" 17/32)	-
MEMORY (AMEM342, AMEM324, AMEM343, ARUB1077S, ARUB1040S)	750 (29" 17/32)	-
SQUARE (ARUB1117, ARUB1118, ARUB0932N, ARUB0933N)	-	700 (27" 9/16)
SEN (ASEN0912V)	-	700 (27" 9/16)

* inserasse gruppo / axial distance for tap
** filo inferiore gruppo / Tap's lower edge



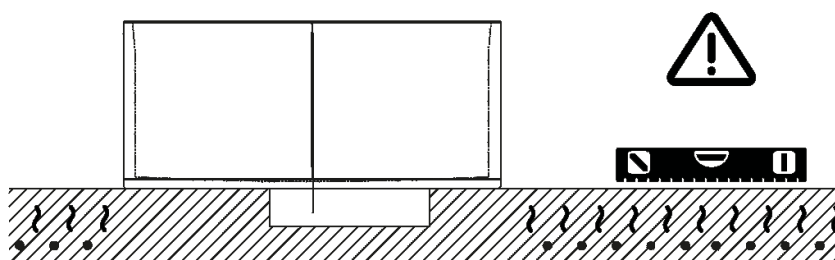
Dimensions for freestanding spouts



	A	B	C	D
FEZ 2 (ARUB140, ARUB141, AFE026)	80 (3 ¹ / ₈)	188 (7 ¹³ / ₃₂)	435 (17 ¹ / ₈)	835 (32 ⁷ / ₈)
FEZ (ARUB145, ARUB170)	80 (3 ¹ / ₈)	188 (7 ¹³ / ₃₂)	435 (17 ¹ / ₈)	835 (32 ⁷ / ₈)
MEMORY (AMEM327, AMEM325, ARUB1078, ARUB1072, ARUB1033)	80 (3 ¹ / ₈)	188 (7 ¹³ / ₃₂)	435 (17 ¹ / ₈)	835 (32 ⁷ / ₈)
SQUARE (ARUB1112, ARUB1115, ARUB0961L, ARUB0934L, ARUB0935NL, ARUB0936NL, ARUB0952L)	80 (3 ¹ / ₈)	188 (7 ¹³ / ₃₂)	435 (17 ¹ / ₈)	835 (32 ⁷ / ₈)
SEN (ASEN0911, ASEN0977)	80 (3 ¹ / ₈)	170 (6 ¹¹ / ₁₆)	417 (16 ²⁷ / ₆₄)	817 (32 ¹¹ / ₆₄)



Note



La vasca deve essere installata su un pavimento perfettamente piano.
The bathtub must be positioned on a flat floor surface.

E' necessario predisporre a pavimento un pozzetto.
It is necessary to prepare a recess in the floor.

Evitare di realizzare impianti di riscaldamento nell'area sottostante la vasca.
Avoid the installation of floor heating plants in the area under the bathtub.