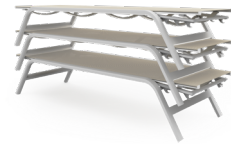


Stack

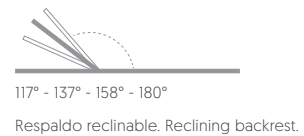
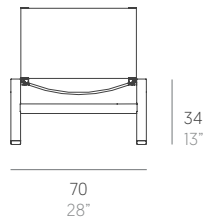
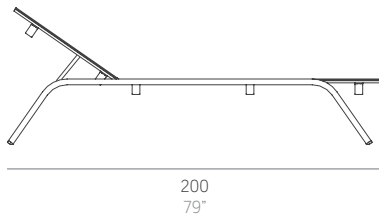
Borja García

Tumbona. Chaise lounge



Apilable. Stackable

Medidas. Sizes



Materiales. Materials

Aluminio soldado termolacado.
Tela Batyline®
Gomaespuma de poliuretano.
Tapicería desenfundable.
Funda protectora.

Thermo-lacquered welded aluminium.
Batyline® fabric.
Polyurethane foam rubber.
Removable fabric cover.
Protective cover.

Características. Characteristics

Estructura. Frame
📦 15,5 Kg - 34.10 lbs

Colchoneta. Mat
📦 5,3 Kg - 11.66 lbs

Caja. Box
1 ud/unit | 1,24 m³ - 43.79 ft³

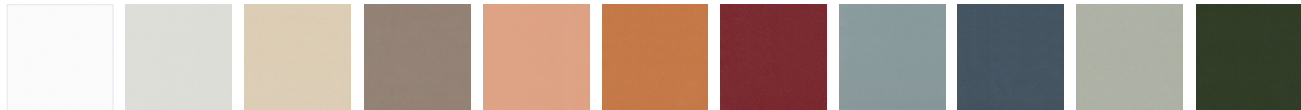
Mantenimiento. Maintenance

Ver apartado de limpieza y mantenimiento
gandiablasco.com

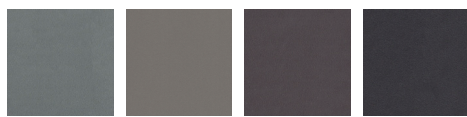
See cleaning and maintenance section
gandiablasco.com

Colores y acabados. Colours and finishes

Aluminium



9016 White	7038 Agate grey	1019 Sand	7006 Bronze	3012 Beige red	8023 Orange brown	3005 Wine red	7031 Blue grey	5008 Grey blue	7033 Cement grey	6007 Bottle green
---------------	--------------------	--------------	----------------	-------------------	----------------------	------------------	-------------------	-------------------	---------------------	----------------------



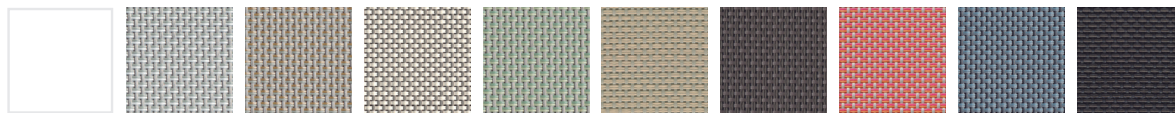
7043 Anthracite	7039 Quartz grey	8019 Grey brown	9011 Black
--------------------	---------------------	--------------------	---------------

Polyurethane



9016 White	7038 Agate grey	1019 Sand	7006 Bronze	7031 Blue grey	6003 Olive green	7043 Anthracite
---------------	--------------------	--------------	----------------	-------------------	---------------------	--------------------

Batyline®



White	Grey	Stone	Camel	Green	Sand	Bronze	Terracotta	Blue	Anthracite
-------	------	-------	-------	-------	------	--------	------------	------	------------

Phenolic



White	Folkestone	Possum	Sand	Bronze	Terracotta	Burgundy	Lead	Dark chocolate	Anthracite	Black
-------	------------	--------	------	--------	------------	----------	------	----------------	------------	-------