

# mdf italia



© COPYRIGHT 2021 MDF ITALIA SRL SOCIETA' UNIPERSONALE

2016

## LINK 1

Designed by Bruno Fattorini

Link 1 Shelf is associated with the evolution of current design concept, that goes beyond the traditional vision of pure aesthetic dimension, to be a polyhedral object in which function, simplicity, innovation and project culture are merged.

Link1 is a simple and pure sign capable of conversing with different shapes and of aggregating fairly with different products. A "universal" line, useful for every need with a considerable capability of adapting to space.

The shelf is also available in electrified version, with cable management door and back interspace to make cables pass and be hidden.

## STRUCTURE

Top made from MD wood fiberboards, coated with: matt white acrylic resin, natural oak wood, carbonized wood, fine wood, Italian walnut, reconstituted stone, reconstructed stone white calce, reconstructed stone black slate, reconstructed marble in black Ebony, reconstructed marble white Carrara, diamond (glossy red) and brass sheet. The white acrylic resin finish matches with the Tense collection. The wood, brass, red diamond, reconstructed stone and reconstructed marble finishes match with the Tense Material collection.

Shelf with bearing bracket (maximum capacity of 20 kg/ml) made from steel powder-coated in aluminium grey.

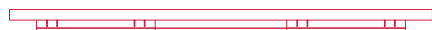
Adjustable inclination with special soft perimeter profile, that enables an easy and perfect installation to make up for the various irregularities of wall structures.

## SIZE AND TYPOLOGIES

Shelf available in the following lengths: L180, 210, 240, 270 and L300 cm, D48,5 cm H6 cm.

Also available in electrified version, with cable management door and back interspace to make cables pass and be hidden. Door available in matt white for the acrylic resin, reconstructed stone white Calce and reconstructed marble Carrara white version; in matt black for the other versions.

## LINK 1 - SHELF



### dimensions

L180 D48.5 H6 (top thickness)

L210 D48.5 H6

L240 D48.5 H6

L270 D48.5 H6

L300 D48.5 H6

**also available in electrified version,  
with cable management door and back interspace  
to make cables pass and be hidden.**

# Finishing

The number in the dot corresponds to the number of colour/material finish.

Here below, in the section FINISH OPTIONS, please note all the colours of the materials used for this product.

## SHELF

---

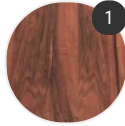
### Structure



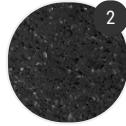
Wood



Carbone



Fine Wood



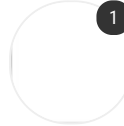
Marble



Brass



Diamond



Solid surface



Reconstructed  
stone

# Finish options

## STRUCTURE

---

### Wood



Wood X085

### Carbone



Carbonised  
wood X094

### Fine Wood



Fine wood,  
Italian walnut  
X119

### Marble



Reconstructed  
marble white  
Carrara X120



Reconstructed  
marble black  
ebony X111

### Brass



Brass X086

## Diamond



Diamond,  
glossy red  
X121

## Solid surface



Solid surface  
white 3mm  
X035

## Reconstructed stone



Reconstructed  
stone white  
Calce X131



Reconstructed  
stone black  
slate X132



Reconstructed  
stone X084