

mdf italia



© COPYRIGHT 2021 MDF ITALIA SRL SOCIETA' UNIPERSONALE

2020

ARPA LOW TABLE

Designed by Ramón Esteve

INDOOR AND OUTDOOR LOW TABLE

As its name implies, ARPA Collection is inspired by the harp, one of the most beautiful and mesmerizing musical instruments. Unlike the meticulous work involved in manufacturing a harp, in designing this collection, rigorous paring down was applied, resolving each piece with the least possible number of elements. Designed to be timeless, ARPA aims to become an icon, not only for aesthetical reasons, but also for its functionality and comfort.

Arpa Low Table is available in a range of four colours:

- . structure goffered matt white painted with light grey calce matt ceramic top;
- . structure goffered matt black iron painted with black calce matt ceramic top;
- . structure goffered matt pewter painted with matt medium grey Pietra di Savoia ceramic top;
- . structure goffered matt corten painted with corten ceramic top (X010).

[DOWNLOAD CATALOGUE](#)

[DISCOVER ALSO ARPA SOFA, ARMCHAIR AND POUF](#)

STRUCTURE

Loadbearing structure in stainless steel, 2 x 2 cm section, epoxy powder coated using specific treatment for outdoor use. Top made of fine porcelain stoneware laminate, matt variations in light grey calce or black calce. Bush hammered medium grey pietra di Savoia, and natural satin-finished corten.

OUTDOOR USE

All the variants available, are perfect in both indoor and outdoor environments.

OUTDOOR COVERING TARPAULIN

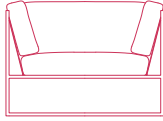
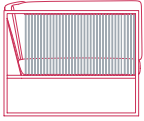
Protective tarpaulin specifically for outdoor products, waterproof, made of 100% polyester, outside with acrylic coating, inside with acrylic resin coating.

Its characteristics are emphasised by its fully fungicidal Teflon finish. Each tarpaulin comes with a closable slip cover, so that it can be folded and kept correctly when not in use.

ARPA

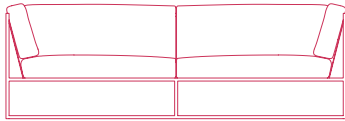
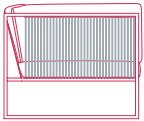


ARMCHAIR



L102 D87 H70 cm
seat H46 D60 cm

SOFA 3S



L220 D87 H70 cm
seat H46 D60 cm

SIDE TABLE



L87 D87 H27

POUF



L97 D97 H43

Finishing

The number in the dot corresponds to the number of colour/material finish.

Here below, in the section FINISH OPTIONS, please note all the colours of the materials used for this product.

SIDE TABLES

Structure



White match



Corten match



Iron black match



Pewter match

Finish options

STRUCTURE

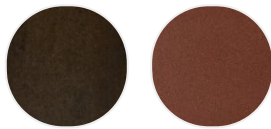
White match



Top in matt
light grey
calce
ceramic

Structure in
matt white
goffered
painted X124

Corten match



Corten
ceramic top
X010

Structure
matt corten
goffered
painted X128

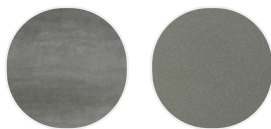
Iron black match



Top in matt
black calce
ceramic

Structure in
black iron
goffered
painted X130

Pewter match



Top in matt
medium grey
pietra di
Savoia
ceramic

Structure in
matt pewter
goffered
painted X129