



' vol. 3 IN/OUTDOOR

CHAIR and SMALL ARMCHAIR

One-piece reinforced polypropylene high pressure injection gas molded piece.

Chairs can be stacked up to 8 high.

Small armchairs can be stacked up to 4 high.

TABLE

Reinforced polypropylene over steel column and base covered in polypropylene.

NOTES:

- minimum order for chairs and small armchairs: 4 items or multiples of 4 in same color and model
- shading and other minor color variations, more visible in black, are inherent in the material and are not a defect
- tables are not recommended for commercial and intensive use as the material does not tolerate sustained temperature ranges above 30°C or prolonged direct exposure to sun.

' vol.3 IN/OUTDOOR

SEDIA e POLTRONCINA

Monoscocca in polipropilene rinforzato ottenuto da stampo con iniezione a gas.

La sedia è impilabile fino a 8 unità.

La poltroncina è impilabile fino a 4 unità.

TAVOLO

Polipropilene rinforzato con colonna e base in acciaio rivestiti in polipropilene.

NOTE:

- ordine minimo per sedie e poltroncine: 4 pezzi o multipli di 4 dello stesso colore e tipo articolo
- il colore nero evidenzia maggiormente, rispetto agli altri colori, ombreggiature intrinseche del materiale, che sono da ritenersi nella norma
- il tavolo non è adatto ad un uso contract intensivo perché il materiale non sopporta un'escursione termica superiore ai 30 °C e un'esposizione diretta al sole.

Technical tests - Prove tecniche

Supernatural chair:

ANSI BIFMA x5.1-2002/11

ANSI BIFMA x5.1-2002/16

EN 1728:2012 clause 6.4 level L1-general

EN 1728:2012 clause 6.5 level L1-general

EN 1728:2012 clause 6.15 level L1-general

EN 1728:2012 clause 6.16 level L1-general

EN 1728:2012 clause 6.17 level L1-general

Supernatural small armchair:

EN 1728:2000 clause 6.2.1 level 3 severe

EN 1728:2000 clause 6.2.2 level 3 severe

EN 1728:2000 clause 6.6 level 3 severe

EN 1728:2000 clause 6.7 level 3 severe

UNI ENV 581-2:2000 Annex A.2.1

UNI ENV 581-2:2000 Annex A.2.2

UNI ENV 581-2:2000 Annex A.3.1

Supernatural table:

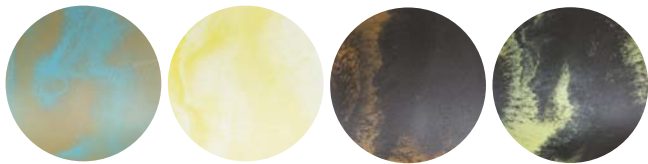
EN 1730:2000 clause 6.3 level 3

EN 1730:2000 clause 6.4 level 3

EN 1730:2000 clause 6.7 test passed

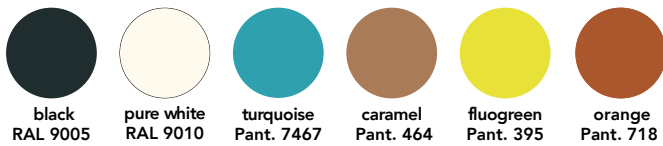


SU0 M66: Chairs polyethylene colours - Colori polietilene sedia



turquoise /caramel white / fluogreen black / orange black / fluogreen

SU0 156-061: Chairs and armchairs colours - Colori sedia e poltroncina



black RAL 9005 pure white RAL 9010 turquoise Pant. 7467 caramel Pant. 464 fluogreen Pant. 395 orange Pant. 718

SU0 050: Chairs colours - Colori sedia



black RAL 9005 pure white RAL 9010

SU0 OS1: Table colours - Colori tavolo

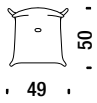
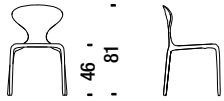


caramel Pant. 464 fluogreen Pant. 395

Chair

Sedia 050

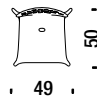
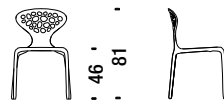
1 mt. 0,4 m³ 5 Kg



Chair with perforated back

Sedia con schienale forato 156

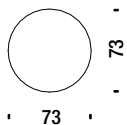
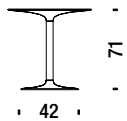
0,4 m³ 5 Kg



Round table

Tavolo tondo 051

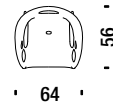
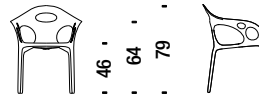
0,1 m³ 20 Kg



Small armchair

Poltroncina 061

0,4 m³ 6 Kg



Chair bicolored with perforated back - DISCONTINUED DEC 2022

Sedia schienale forato bicolore M66

0,4 m³ 5 Kg

