



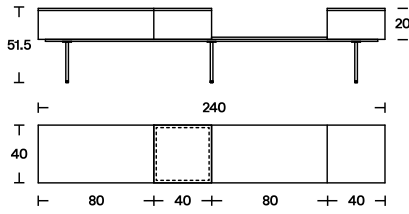
Moodboard Console

Year
Designer

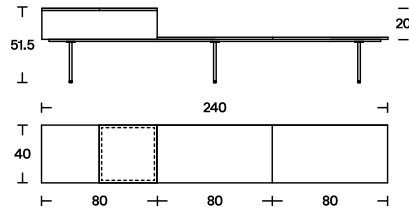
2018
Massimo Mariani

The skillful experiments with textures and shades of Massimo Mariani's Moodboard coffee tables and sideboards gracefully mixes wood, brass, and marble to create a playful yet elegant multi-material surface. The low sideboard can be personalized with a combination of top materials, and a polished steel or brass tray can be added as a valet or utility tray, which also functions as an integral part of the design and structure when not in use.

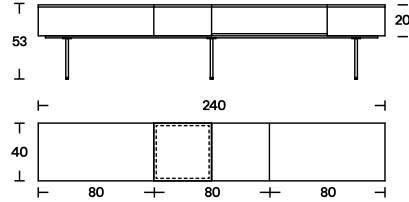
Dimensions



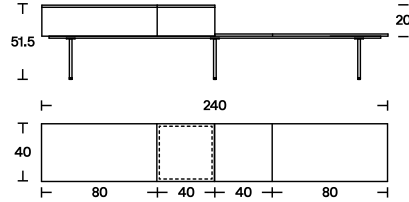
C240-3
L 240
D 40
H 51.5



C240-1
L 240
D 40
H 51.5



C240-4
L 240
D 40
H 53



C240-2
L 240
D 40
H 51.5

Finishes

Wood: 30mm thick dark stained walnut or swamp ash.
Marble: 15mm thick white arabesque or grey graphite, matte finish.
Tray: polished steel or brass.
Structure: micaceous grey painted.

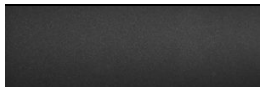
Top



Tray



Structure



Finishes legend

Matt white arabesque marble	MR02
Matt graphite grey marble	MR03
Dark stained walnut	ES59
Swamp ash	ES57
Shiny steel	MT01
Satin polished steel - brass effect	MT03
Micaceous grey painted	