

mdf italia



© COPYRIGHT 2021 MDF ITALIA SRL SOCIETA' UNIPERSONALE

2017

EXTENSION

Designed by Bruno Fattorini

The new range of Extension tables excellently combines the aesthetics of MDF Italia table with the functionality of an extension product, thus meeting market demands.

The system's flexibility is emphasized by the presence of one or two extension tops measuring 50cm each and resting on the frame's slide rails. According to the customer's needs, the nominal length of the table can be increased from 50 to 100 cm, to accommodate an unexpected guest or to adapt at best to the environment.

[WATCH THE VIDEO](#)

TOPS

The laminate tabletops and extension tops in Fenix are built-in and are reinforced internally by 8mm thick aluminium sheets.

The tables are available with one or two extension tops.

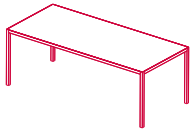
STRUCTURE

The legs and perimeter frame are in extruded aluminium, available in epoxy powder matt painted version.

Two levers on the undertop rails make it possible to lock the push-in and pull-out operations.

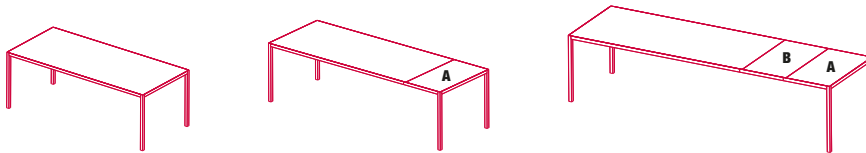
The extension tops slide into an epoxy powder matt painted tray, equipped with non-scratch lining.

EXTENSION



H72 H75 cm	extension
W90 L160	W90 L210 / 260
W90 L180	W90 L230 / 280
W90 L200	W90 L250 / 300
W98 L160	W98 L210 / 260
W98 L180	W98 L230 / 280
W98 L200	W98 L250 / 300

EXAMPLES



According to the customer's needs, the nominal length of the table can be increased from 50 (A) to 100 (A+B) cm.

Finishing

The number in the dot corresponds to the number of colour/material finish.

Here below, in the section FINISH OPTIONS, please note all the colours of the materials used for this product.

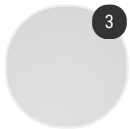
TABLE

Top



Fenix

Structure



Matt painted

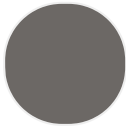
Finish options

TOP

Fenix



Fenix matt
white X020



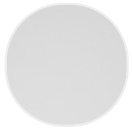
Fenix matt
medium grey
X021



Fenix matt
black X022

STRUCTURE

Matt painted



Matt painted
white X053



Matt painted
medium grey



Matt painted
graphite grey
X054