



---

Bed with structure made of solid wood and curved padded headboard covered with leather or fabric. Rounded bed sides.

---

# SLEEPY

**STANDARD VERSION:** ADJUSTABLE SLATTED BASE; UPON REQUEST FIXED SLATTED BASE AT THE SAME PRICE (for further information please contact our Sales Department)

SLEEPY DOUBLE					
CODE	SIZE	LEATHER FABRIC	A1	A2	A3
SLEEPY DOUBLE	total size W 177 x D 235,8 x H 104,5 space for slatted base W 162 x D 202 suggested mattress W 160 x D 200	D1	■	■	■
		D2	■	■	■
		D3	■	■	■
		D4	■	■	■
		D6	■	■	■
SLEEPY DOUBLE	total size W 187 x D 235,8 x H 104,5 space for slatted base W 172 x D 202 suggested mattress W 170 x D 200	D1	■	■	■
		D2	■	■	■
		D3	■	■	■
		D4	■	■	■
		D6	■	■	■
SLEEPY DOUBLE	total size W 197 x D 235,8 x H 104,5 space for slatted base W 182 x D 202 suggested mattress W 180 x D 200	D1	■	■	■
		D2	■	■	■
		D3	■	■	■
		D4	■	■	■
		D6	■	■	■
SLEEPY DOUBLE	total size W 217 x D 235,8 x H 104,5 space for slatted base W 202 x D 202 suggested mattress W 200 x D 200	D1	■	■	■
		D2	■	■	■
		D3	■	■	■
		D4	■	■	■
		D6	■	■	■

## AVAILABLE FINISHES:

**A1:** walnut without knots, walnut with knots, elm

**A2:** oak without knots, oak with knots, cherry, maple

**A3:** oak without knots finish: whitened, mystic black, neutro  
oak with knots finish: whitened, mystic black, neutro

**D1:** fabric: canvas, divina melange 2, hallingdal 65, velvet Harald

**D2:** fabric: maple

**D3:** leather: camoscio, cristal

**D4:** leather: nabuk, utah

**D6:** COL, COM

# SLEEPY

**STANDARD VERSION:** ADJUSTABLE SLATTED BASE; UPON REQUEST FIXED SLATTED BASE AT THE SAME PRICE (for further information please contact our Sales Department)

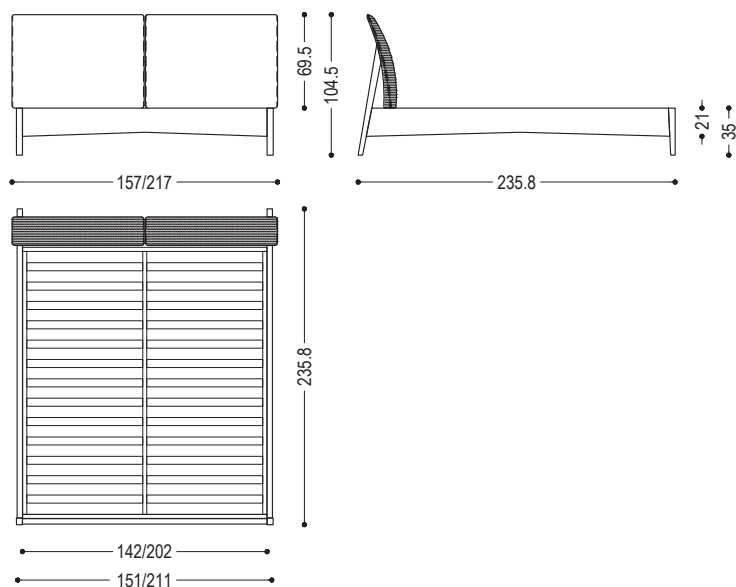
## SLEEPY FRENCH / SINGLE

CODE	SIZE	LEATHER FABRIC	A1	A2	A3
SLEEPY SINGLE	total size W 117 x D 235,8 x H 104,5 space for slatted base W 102 x D 202 suggested mattress W 100 x D 200	D1	■	■	■
		D2	■	■	■
		D3	■	■	■
		D4	■	■	■
		D6	■	■	■
SLEEPY FRENCH	total size W 157 x D 235,8 x H 104,5 space for slatted base W 142 x D 202 suggested mattress W 140 x D 200	D1	■	■	■
		D2	■	■	■
		D3	■	■	■
		D4	■	■	■
		D6	■	■	■

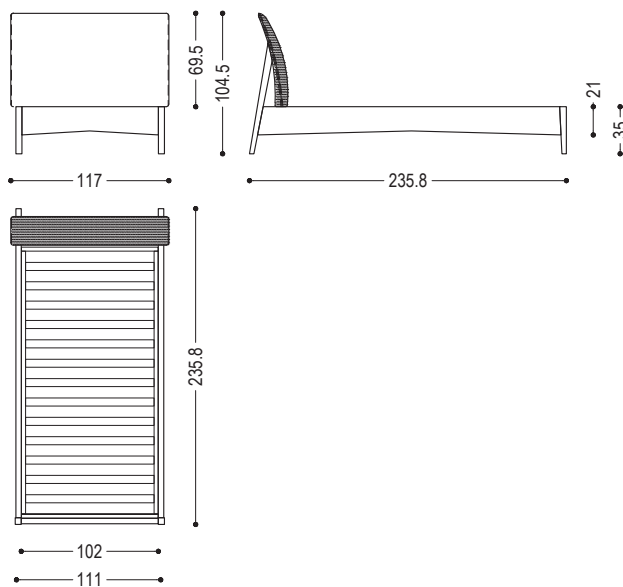
### AVAILABLE FINISHES:

- A1:** walnut without knots, walnut with knots, elm
- A2:** oak without knots, oak with knots, cherry, maple
- A3:** oak without knots finish: whitened, mystic black, neutro  
oak with knots finish: whitened, mystic black, neutro
- D1:** fabric: canvas, divina melange 2, hallingdal 65, velvet harald
- D2:** fabric: maple
- D3:** leather: camoscio, cristal
- D4:** leather: nabuk, utah
- D6:** COL, COM

SLEEPY DOUBLE - SLEEPY FRENCH



SLEEPY SINGLE



## WOOD

A1



walnut without knots



walnut with knots



elm

A2



oak without knots



oak with knots



cherry



maple

A3



oak without knots finish:  
whitened



oak without knots finish:  
mystic black



oak without knots finish:  
neutro



oak with knots finish:  
whitened




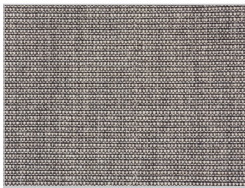
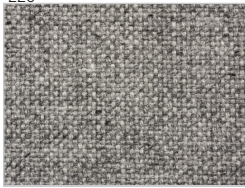





oak with knots finish:  
mystic black



oak with knots finish:  
neutro



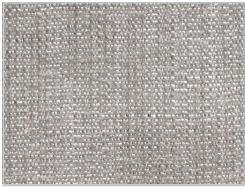
LEATHER / FABRIC

D1					
	<p>fabric: canvas: 114</p> 	<p>fabric: canvas: 124</p> 	<p>fabric: canvas: 134</p> 	<p>fabric: canvas: 154</p> 	<p>fabric: canvas: 174</p> 
	<p>fabric: divina melange 2: 120</p> 	<p>fabric: divina melange 2: 170</p> 	<p>fabric: divina melange 2: 180</p> 	<p>fabric: divina melange 2: 220</p> 	<p>fabric: divina melange 2: 260</p> 
	<p>fabric: divina melange 2: 280</p> 	<p>fabric: hallingdal 65: 103</p> 	<p>fabric: hallingdal 65: 116</p> 	<p>fabric: hallingdal 65: 130</p> 	<p>fabric: hallingdal 65: 166</p> 
	<p>fabric: hallingdal 65: 180</p> 	<p>velvet fabric: harald: 182</p> 	<p>velvet fabric: harald: 283</p> 	<p>velvet fabric: harald: 443</p> 	<p>velvet fabric: harald: 512</p> 
	<p>velvet fabric: harald: 182</p> 	<p>velvet fabric: harald: 242</p> 	<p>velvet fabric: harald: 283</p> 	<p>velvet fabric: harald: 443</p> 	<p>velvet fabric: harald: 512</p> 
	<p>velvet fabric: harald: 552</p> 	<p>velvet fabric: harald: 242</p> 	<p>velvet fabric: harald: 283</p> 	<p>velvet fabric: harald: 443</p> 	<p>velvet fabric: harald: 512</p> 
	<p>velvet fabric: harald: 552</p> 	<p>velvet fabric: harald: 242</p> 	<p>velvet fabric: harald: 283</p> 	<p>velvet fabric: harald: 443</p> 	<p>velvet fabric: harald: 512</p> 
	<p>velvet fabric: harald: 552</p> 	<p>velvet fabric: harald: 242</p> 	<p>velvet fabric: harald: 283</p> 	<p>velvet fabric: harald: 443</p> 	<p>velvet fabric: harald: 512</p> 

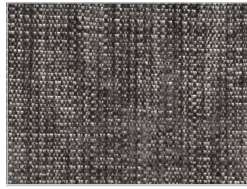


# SLEEPY | AVAILABLE FINISHES

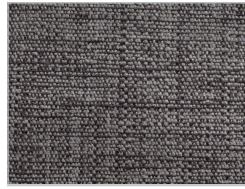
D2



fabric:  
maple:  
112



fabric:  
maple:  
132



fabric:  
maple:  
142



fabric:  
maple:  
162



fabric:  
maple:  
192



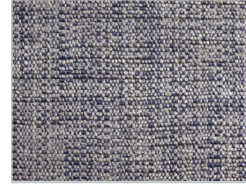
fabric:  
maple:  
222



fabric:  
maple:  
232



fabric:  
maple:  
362



fabric:  
maple:  
742



fabric:  
maple:  
792

D3



Leather camoscio:  
1



Leather camoscio:  
10



Leather camoscio:  
11



Leather camoscio:  
26



Leather camoscio:  
27



Leather camoscio:  
28



Leather camoscio:  
31



Leather cristal:  
13



Leather cristal:  
14



Leather cristal:  
17



Leather cristal:  
18



Leather cristal:  
37



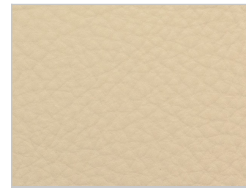
Leather cristal:  
49



Leather cristal:  
51



Leather cristal:  
65



Leather cristal:  
70

# SLEEPY | AVAILABLE FINISHES

D4					
	Leather nabuk: 101	Leather nabuk: 102	Leather nabuk: 103	Leather nabuk: 104	Leather nabuk: 105
					
	Leather nabuk: 106	Leather nabuk: 107	Leather nabuk: 108	Leather nabuk: 109	
					
	Leather utah: 101	Leather utah: 102	Leather utah: 103	Leather utah: 104	Leather utah: 105
					
	Leather utah: 106	Leather utah: 107	Leather utah: 108		