



Padded armchair with structure in solid teak wood, turned, assembled and sanded completely by hand. An original detail are the strips of outdoor fabric running both under the seat, on the backrest and on the armrests.

STANDARD VERSION: OUTDOOR FABRIC PATIO (D5)

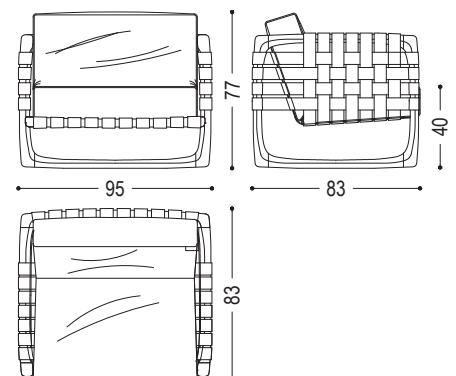
AVAILABLE IN OTHER WOODS/LEATHERS/FABRICS IN THE ARMCHAIRS SECTION (FINISHES NOT SUITABLE FOR OUTDOOR USE)

CODE	SIZE	A11
BUNGALOW-POL1	W.95 x D.83 x H.40/77	■

AVAILABLE FINISHES:

A11: teak

D5: outdoor fabric



BUNGALOW ARMCHAIR | AVAILABLE FINISHES

WOOD

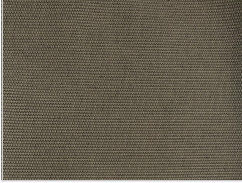
A11



teak

LEATHER / FABRIC

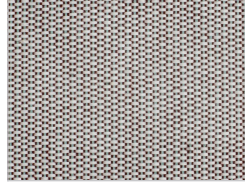
D5



outdoor fabric:
150



outdoor fabric:
170



outdoor fabric:
220



outdoor fabric:
230