



Coffee table in solid scented cedar machined from a section of a tree trunk, characterized by a rhombus shape and base in iron with a circular floor plate. Available in single version or as a combination of three elements.

STANDARD VERSION: NATURAL IRON BASE, OILED (B1)

CODE	SIZE	A7	A8	A9
47.07.2	W.34,6 x D.41,7 x H.28	■	■	■
47.07.1	W.34,6 x D.41,7 x H.36	■	■	■
47.08.2	W.67,7 x D.67,7 x H.28	■	■	■
47.08.1	W.67,7 x D.67,7 x H.36	■	■	■

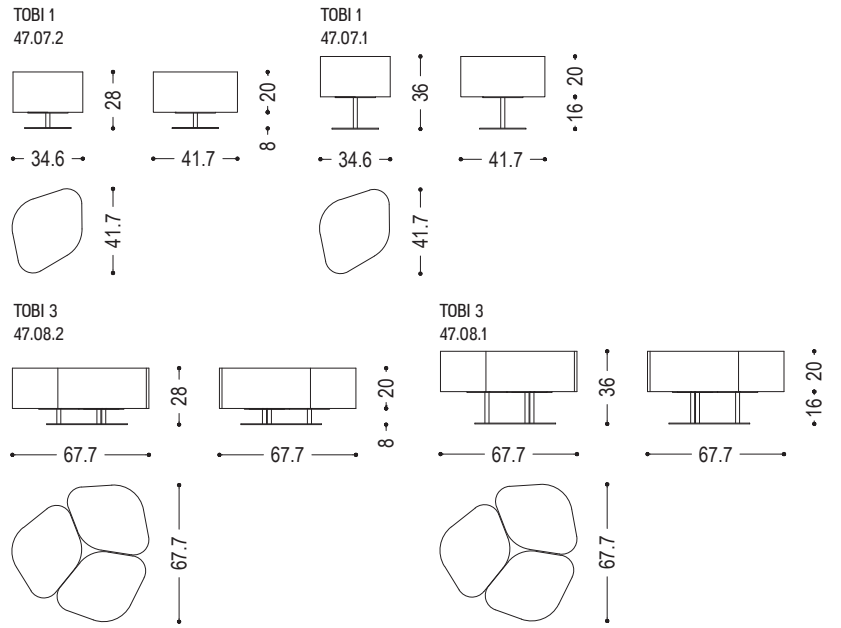
AVAILABLE FINISHES:

- A7:** cedar
- A8:** sandblasted cedar
- A9:** cedar contract finish, vulcano cedar

FEASIBILITY LACQUERED IRON BASE	
B2	■
B3	■

AVAILABLE FINISHES:

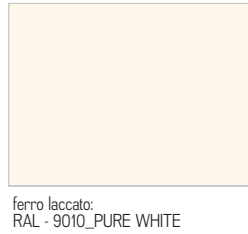
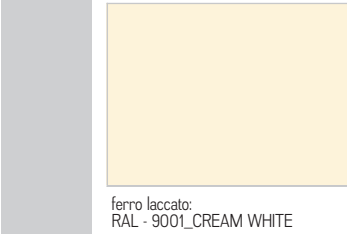
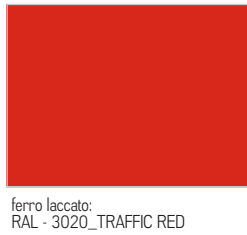
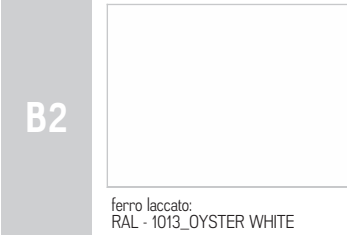
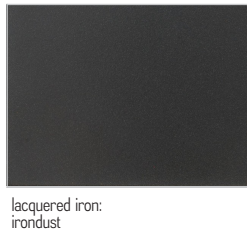
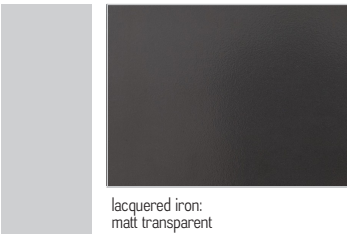
- B2:** lacquered iron: matt transparent, iron dust, RAL (only selected colours)
- B3:** lacquered iron matt brushed effect: aged copper, aged bronze, stainless steel, titanium
lacquered iron oxidised effect



WOOD



IRON



TOBI | AVAILABLE FINISHES

B3



lacquered iron, matt brushed effect:
aged copper



lacquered iron, matt brushed effect:
aged bronze



lacquered iron, matt brushed effect:
stainless steel



lacquered iron, matt brushed effect:
titanium



lacquered iron, oxidised effect