



Armchair with solid wood structure, with backrest and comfortable padded seat, upholstered in leather or fabric with visible stitching.

ATTENTION: FOR PRICING PLEASE ADD THE WOODEN FRAME, THE BACK AND THE SEAT

THE BACK CANNOT BE COVERED WITH FABRIC MAPLE

CODE	SIZE	FOR STRUCTURE ONLY			
		A1	A2	A3	A4
NOBLÉ ARMCHAIR	W.73 x D.76 x H.44/75	■	■	■	■

AVAILABLE FINISHES:

- A1: walnut without knots, elm
- A2: oak without knots, cherry, maple
- A3: oak without knots finish: whitened, mystic black, neutro
- A4: oak without knots pigmented: ash grey, white milk, total black

FOR BACK CUSHION	
D1	■
D3	■
D4	■
D6	■

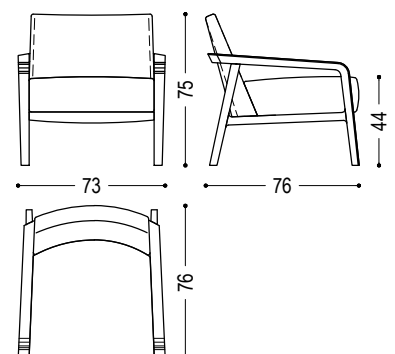
AVAILABLE FINISHES:

- D1: fabric: canvas, divina melange 2, hallingdal 65, velvet harald
- D3: leather: camoscio, cristal
- D4: leather: nabuk, utah
- D6: COL, COM

FOR SEAT CUSHION	
D1	■
D2	■
D3	■
D4	■
D6	■

AVAILABLE FINISHES:

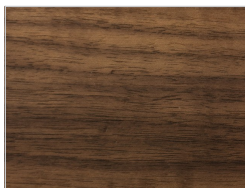
- D1: fabric: canvas, divina melange 2, hallingdal 65, velvet harald
- D2: fabric: maple
- D3: leather: camoscio, cristal
- D4: leather: nabuk, utah
- D6: COL, COM



NOBLÉ ARMCHAIR | AVAILABLE FINISHES

WOOD

A1

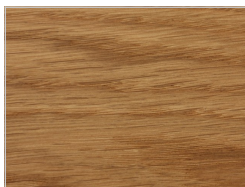


walnut without knots

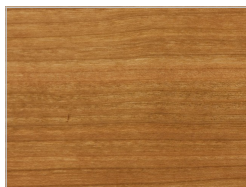


elm

A2



oak without knots



cherry



maple

A3



oak without knots finish:
whitened



oak without knots finish:
mystic black



oak without knots finish:
neutro

A4



oak without knots pigmented:
ash grey




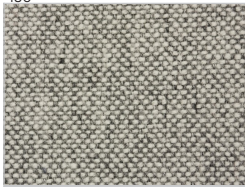
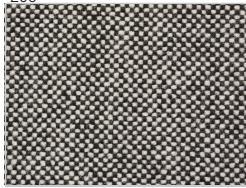


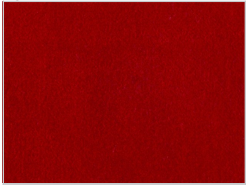

oak without knots pigmented:
white milk



oak without knots pigmented:
total black

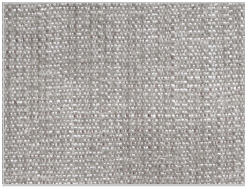
NOBLÉ ARMCHAIR | AVAILABLE FINISHES

LEATHER / FABRIC

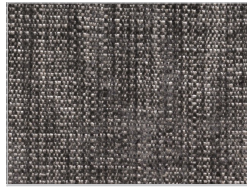
D1					
	<p>fabric: canvas: 114</p>	<p>fabric: canvas: 124</p>	<p>fabric: canvas: 134</p>	<p>fabric: canvas: 154</p>	<p>fabric: canvas: 174</p>
					
	<p>fabric: divina melange 2: 120</p>	<p>fabric: divina melange 2: 170</p>	<p>fabric: divina melange 2: 180</p>	<p>fabric: divina melange 2: 220</p>	<p>fabric: divina melange 2: 260</p>
					
	<p>fabric: divina melange 2: 280</p>	<p>fabric: hallingdal 65: 103</p>	<p>fabric: hallingdal 65: 116</p>	<p>fabric: hallingdal 65: 130</p>	<p>fabric: hallingdal 65: 166</p>
					
	<p>fabric: hallingdal 65: 180</p>				
					
	<p>velvet fabric: harald: 182</p>	<p>velvet fabric: harald: 242</p>	<p>velvet fabric: harald: 283</p>	<p>velvet fabric: harald: 443</p>	<p>velvet fabric: harald: 512</p>
					
<p>velvet fabric: harald: 552</p>	<p>velvet fabric: harald: 582</p>	<p>velvet fabric: harald: 792</p>	<p>velvet fabric: harald: 982</p>		

NOBLÉ ARMCHAIR | AVAILABLE FINISHES

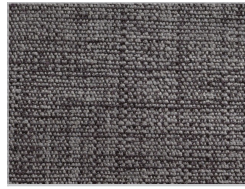
D2



fabric:
maple:
112



fabric:
maple:
132



fabric:
maple:
142



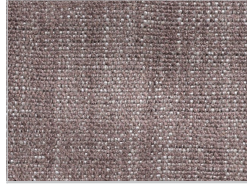
fabric:
maple:
162



fabric:
maple:
192



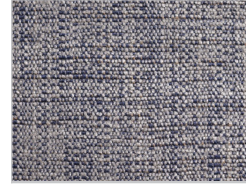
fabric:
maple:
222



fabric:
maple:
232



fabric:
maple:
362



fabric:
maple:
742



fabric:
maple:
792

D3



Leather camoscio:
1



Leather camoscio:
10



Leather camoscio:
11



Leather camoscio:
26



Leather camoscio:
27



Leather camoscio:
28



Leather camoscio:
31



Leather cristal:
13



Leather cristal:
14



Leather cristal:
17



Leather cristal:
18



Leather cristal:
37



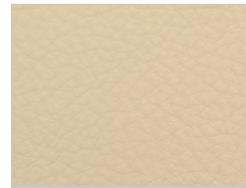
Leather cristal:
49



Leather cristal:
51



Leather cristal:
65



Leather cristal:
70

NOBLÉ ARMCHAIR | AVAILABLE FINISHES

D4					
	Leather nabuk: 101	Leather nabuk: 102	Leather nabuk: 103	Leather nabuk: 104	Leather nabuk: 105
					
	Leather nabuk: 106	Leather nabuk: 107	Leather nabuk: 108	Leather nabuk: 109	
					
	Leather utah: 101	Leather utah: 102	Leather utah: 103	Leather utah: 104	Leather utah: 105
					
	Leather utah: 106	Leather utah: 107	Leather utah: 108		