



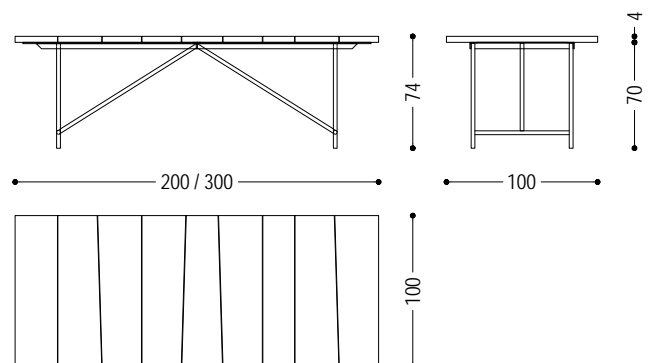
Table with top in solid wood, composed of asymmetric lists with gaps; trestle base with an essential and linear shape, made of hollow tubular iron.

**STANDARD VERSION: IRON BASE LACQUERED IRONDUST COLOUR (B2)**

CODE	SIZE	BASE	A1	A2	A4
NERVI-1	W.200 x D.100 x H.74	B2	■	■	■
		B3	■	■	■
NERVI-2	W.220 x D.100 x H.74	B2	■	■	■
		B3	■	■	■
NERVI-3	W.240 x D.100 x H.74	B2	■	■	■
		B3	■	■	■
NERVI-4	W.260 x D.100 x H.74	B2	■	■	■
		B3	■	■	■
NERVI-5	W.280 x D.100 x H.74	B2	■	■	■
		B3	■	■	■
NERVI-6	W.300 x D.100 x H.74	B2	■	■	■
		B3	■	■	■

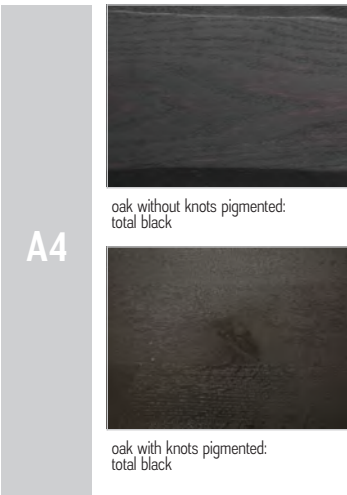
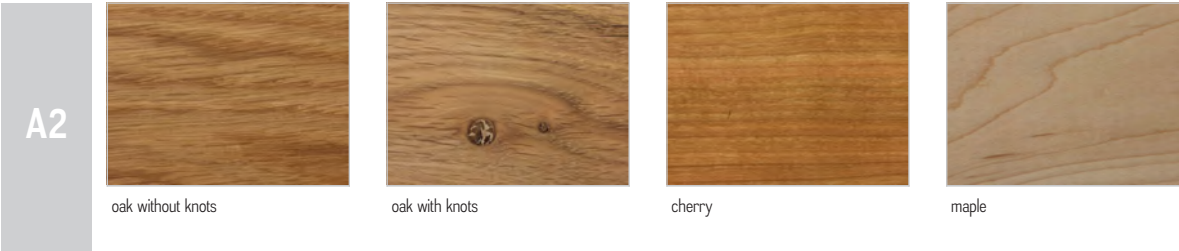
**AVAILABLE FINISHES:**

- A1:** walnut without knots, walnut with knots
- A2:** oak without knots, oak with knots, cherry, maple
- A4:** oak without knots pigmented: total black  
oak with knots pigmented: total black
- B2:** lacquered iron: iron dust, RAL (only selected colours)
- B3:** lacquered iron matt brushed effect: aged bronze, stainless steel, titanium

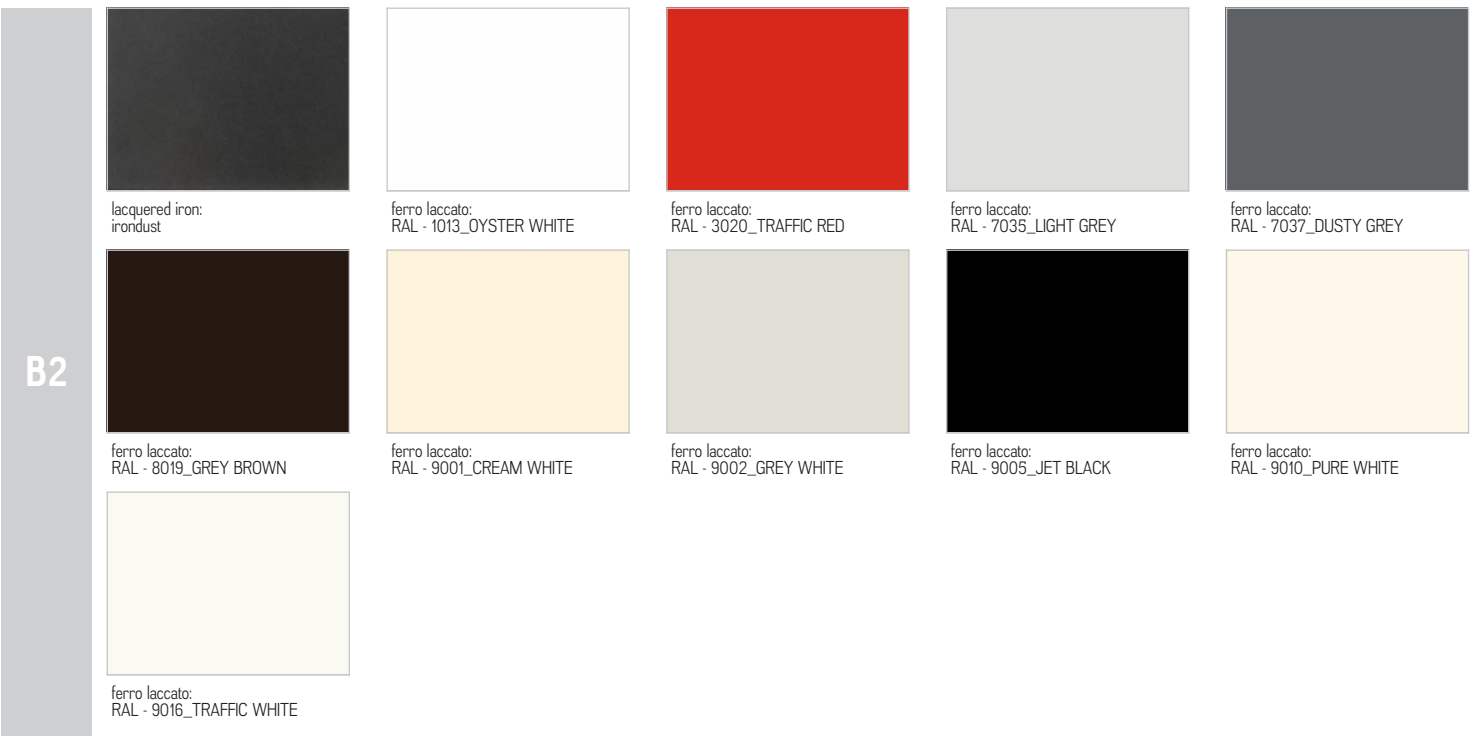


# NERVI TABLE | AVAILABLE FINISHES

## WOOD



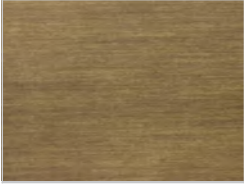
## IRON



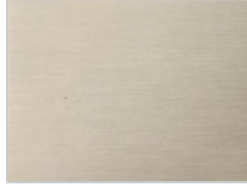
# NERVI TABLE | AVAILABLE FINISHES

---

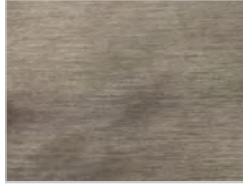
B3



lacquered iron, matt brushed effect:  
aged bronze



lacquered iron, matt brushed effect:  
stainless steel



lacquered iron, matt brushed effect:  
titanium