



Table with solid wood top in glued lists and natural sides, characterized by an iron base with legs in U-shape assembled with dove tail joints.

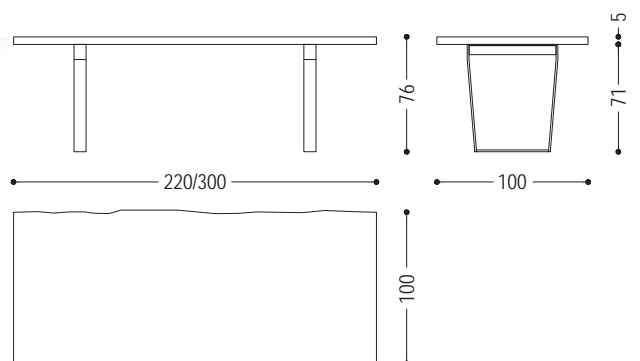
**STANDARD VERSION: IRON BASE LACQUERED IRONDUST COLOUR (B2)**

CODE	SIZE	BASE	A1	A2	A4
D.T.1 NS	W.220 x D.100 x H.76	B2	■	■	■
		B3	■	■	■
D.T.2 NS	W.240 x D.100 x H.76	B2	■	■	■
		B3	■	■	■
D.T.3 NS	W.260 x D.100 x H.76	B2	■	■	■
		B3	■	■	■
D.T.4 NS	W.280 x D.100 x H.76	B2	■	■	■
		B3	■	■	■
D.T.5 NS	W.300 x D.100 x H.76	B2	■	■	■
		B3	■	■	■

**AVAILABLE FINISHES:**

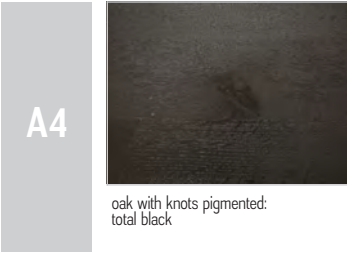
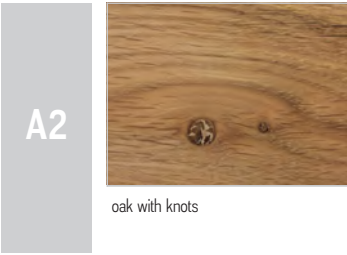
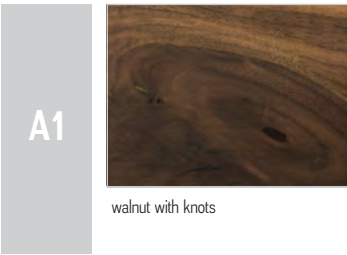
- A1: walnut with knots
- A2: oak with knots
- A4: oak with knots pigmented: total black
- B2: lacquered iron: iron dust, RAL (only selected colours)
- B3: lacquered iron matt brushed effect: aged bronze, stainless steel, titanium

DETAIL: TOP WITH NATURAL SIDES

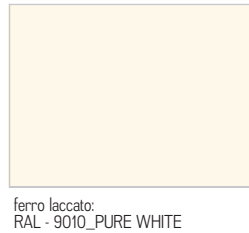
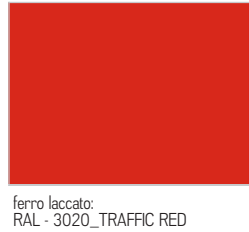
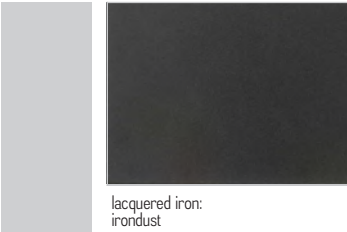


# D.T. TABLE NATURAL SIDES | AVAILABLE FINISHES

## WOOD



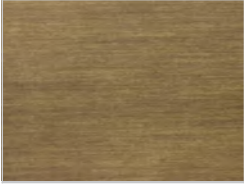
## IRON



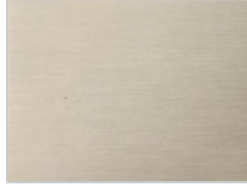
## D.T. TABLE NATURAL SIDES | AVAILABLE FINISHES

---

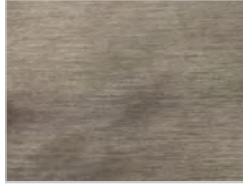
B3



lacquered iron, matt brushed effect:  
aged bronze



lacquered iron, matt brushed effect:  
stainless steel



lacquered iron, matt brushed effect:  
titanium